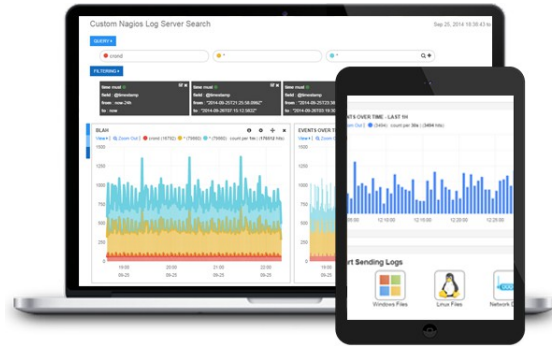




## Nagios Log Server

Nagios Log Server is designed to collect, analyze, alert, and archive log events, providing you with extended insight into the behavior of the servers, users, network devices, and applications in your infrastructure.



## Comprehensive Dashboards

A powerful dashboard system provides users with the ability to query, filter, and analyze incoming log events. Easily drill down to the important information and view patterns with advanced visualization elements. Additionally, dashboards can be customized, saved, and shared with others. Gain extended insight into the health of your infrastructure with one quick view.

## Alerting

Get notified of important log events. Create alerts based on custom queries and thresholds, and receive notifications via email, or send them upstream to your Nagios XI or Nagios Core server. Alternately, Log Server can send an SNMP trap or execute a script in response to problems for integration with other tools and automated remediation.

## High Availability and Failover

Nagios Log Server comes pre-packaged with high availability and failover capabilities. Log Server uses a cluster of servers to automatically store log data to prevent data loss and ensure availability of your log information. Cluster servers automatically failover in the event of an outage to maintain the integrity of your historical data.

## Customizable Dashboards

Integrate Nagios Log Server with Nagios XI or Nagios Core for advanced alerting capabilities and increased security for your entire IT infrastructure.

## Quick Search and Query

Nagios Log Server greatly simplifies the process of searching your log data. Your data is stored in one location, and can be searched with multiple queries and filters allowing you to quickly drill down to the exact problem you are searching for. With all your logs stored in one location it is also easy to correlate events on multiple systems based on the time they occurred.

## Extendable Architecture

Administrators have full access to the backend API allowing for limitless customization with in-house and third-party applications, including the querying of any of the log data as is done through the web UI. Nagios Log Server can adapt to any environment and meet your specific needs.

## Source Setup Guides

Built-in setup guides make configuring your sources to send their data to Log Server quick and easy. Guides are included for Windows, Linux, network devices, Apache, IIS, MySQL, and MSSQL, and files. Custom filters can be written to parse other data types as well to extend Log Server's capabilities

## Real Time Data

Nagios Log Server lets you see the log events from your sources in real time, providing you with the ability to quickly identify and respond to incidents.



## Supported Logs

- Windows Event Logs
- Linux Logs
- Sys Logs
- Network Devices
- Apache
- IIS
- MySQL
- MSSQL
- Files
- and more...

## Operating System Monitoring

- Windows
- Linux
- Unix
- OSX

## Log Sources

- Workstations
- Servers
- Routers
- Switches
- Firewalls
- Printers
- Environmental Devices
- Generic Network Elements

## Reporting

- Built-in System Status Reports
- PCI Compliance Rules
- Advanced Filtering Capabilities

## Notifications

- Email
- Nagios Notifications
- SNMP Trap
- Custom scripts

## Additional features

- Multi-user Capabilities
- Infinite Scalability with Server Clustering

## System Requirements

### Server Operating System:

#### Virtual Hosts:

- VMware Player, Workstation
- VMware, ESX, vSphere
- Microsoft Hyper-V

#### Linux:

- RHEL 6 (32/64bit)/ RHEL 7
- CentOS 6 (32/64bit)/ CentOS 7
- Ubuntu 14/16 (32/64-bit)/Ubuntu 18
- Debian 8/9 (32-bit/64-bit)

### Server Hardware:

- 1 GHz CPU (1-2 Cores), 1+ GB RAM (minimum)
- 2 GHz+ CPU, (4-core) 4+ GB+ RAM (recommended)

### Server Storage:

- 40 GB free space (minimum)
- 80+ GB free space (recommended)
- SSD Recommended for large installs

### Browsers:

- Firefox 4.0+
- Internet Explorer 9+
- Safari 2.0+
- Chrome 28.0+

### Client Operating Systems:

- Windows: Windows XP or newer
- Mac: OSX
- Linux/Unix: 2.4+ kernel Linux distributions, Solaris 9+ , FreeBSD 6.4+, AIX 5.3, 6.1, 7